



screen·master[®]
Insect Control Doors



Model SC-100 *screen-master*[®]
Automatic Roll-up Barrier

Flexon's Screen-Master[®] Automatic Roll-up Barrier is a heavy-duty, industrial grade nylon-mesh screen designed for use on doorway openings where adequate ventilation and sanitation are desired.

As a physical barrier, it helps to prevent airborne contaminants (i.e. insects; birds; etc.) from entering the building, and can be useful in helping to comply with the **Federal Government's Good Manufacturing Practices (GMP)** regulations.



Push Button Station



Heavy-duty Tubular Motor



* 110v UL-rated

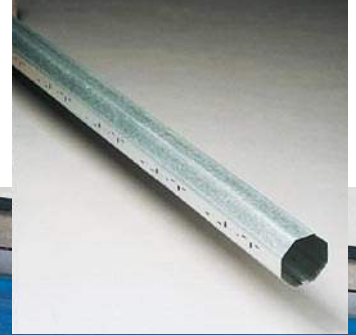
* Non-flammable coil housing

* Intergral low-profile limit switches

* Approx. 12"/sec. opening / closing speed



Heavy-duty Octagonal Galvanized Roll Tube



Nylon Mesh Screen



* 10 oz. / sq. yd. high-strength vinyl-coated polyester.
 15 x 10 thread count

* Light stabilized

* Fire-retardant

* Mildew & decay-resistant

* Cleans with mild soap & water



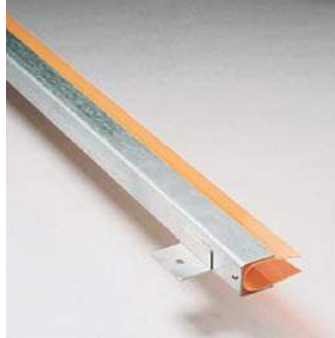
Winner of the
 1994 Plant Engineering Magazine
 "Product of the Year" Award

Low-Profile Guide Tracks

* 2" deep galvanized steel C-channel



* Flexible 0.080" thick orange PVC safety guides



General Product Information

Maximum Unit Sizes:
(Based upon UL mount)

Model SC-100
Automatic Roll-up - 10'0" w x 14'10" h

Model SC-200
Manual Roll-up - 10'0" w x 10'10" h

Model SC-800
Automatic Roll-up - 14'0" w x 16'0" h

Model SC-300 (single slide)
Manual Sliding - 15'0" w x 15'0" h

Model SC-500 (bi-parting)
Manual Sliding - 15'0" w x 15'0" h

Mounting Configurations: (See Page 4)
Under Lintel (Standard)
Face of Wall
Overhead Door Stand-off

Screen Density (Thread Count):
15 x 10 threads/sq. in. (Standard)
28 x 11 threads/sq. in. (High Density)

Color Selection:
Royal Blue (Standard)
Additional colors (Consult Factory)



Wind-stabilizer Profiles

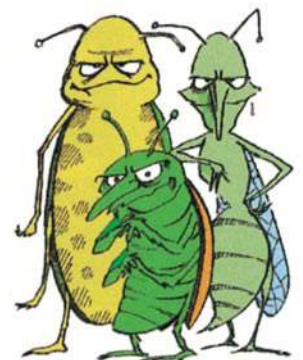
* 4" h safety orange vinyl pockets

* Full-width reinforcement profiles



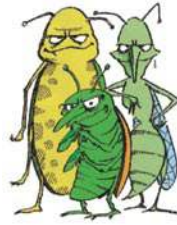
Bottom Draft Seal

* Foam-filled for positive floor contact



Model SC-200 *screen-master*[®]
Manual Roll-up Barrier

The manually-operated roll-up barrier features a spring-loaded galvanized steel roller tube for door sizes up to 10'0" w x 10'10" h. Installation can be: under lintel (Std.); face-mount; or, inside with an overhead door stand-off.



Roller Tube



- * 3" dia. galvanized steel
- * Spring-loaded
- * Adjustable tension

Low-Profile Galvanized Steel Guide Tracks



Nylon Mesh Screen



Wind-stabilizer Profiles



Bottom Draft Seal

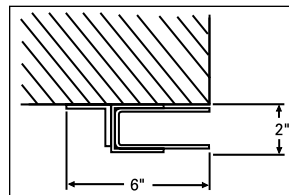


Lockdown Pin

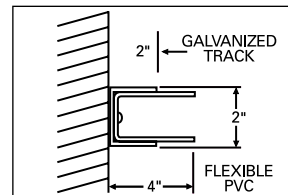


**Manual/Automatic Roll-up
 Model Mounting Options**

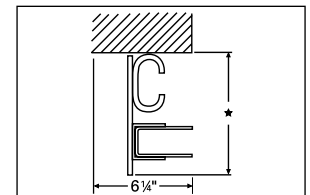
Three mounting options are available to suit any application requirement or space restriction.



Face of Wall Mount



Under Lintel (Std.)



Overhead Door

Model SC-800 *screen-master*[®]
Automatic Roll-Up Barrier

For larger doorways up to 14'0" w x 16'0" h, insect control barriers can be made using our high-torque tubular motor and patented hinged sectional panel design which allows the barrier screen to be raised/lowered at approx. 12"/sec.

Tubular Motor



- * 110v UL-rated
- * Non-flammable coil housing
- * Integral low-profile limit switches



Heavy-duty Octagonal Galvanized Roll Tube



Low-Profile Steel Guide Tracks



- * 4" deep galvanized steel C-channel & flexible 0.080" thick anti-friction PVC material

Wind-Stabilizer Profiles



- * Interlocking anodized aluminum hinges

Push Button Station



- * 2-position, UL-rated constant contact



Nylon Mesh Screen



- * 10 oz. / sq. yd. high-strength vinyl-coated polyester. 15 x 10 thread count.
- * Light stabilized
- * Mildew & decay-resistant
- * Cleans with mild soap & water
- * Fire-retardant



Bottom Draft Seal



- * Hi-tear Flexilon S Loop Seal for positive floor contact

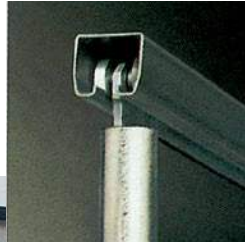


Model SC-300 and SC-500
screen-master®
Manual Sliding Barrier

When insect and pest control are desired in any door opening, the sliding barrier is well-suited for providing ventilation at an affordable price. Designed to either slide to one side (SC-300) or bi-part (SC-500), when required, the sliding barrier is built with simplicity and ease of operation in mind. Recommended for doorway sizes up to 15'0" w x 15'0" h. For larger openings, consult factory.



Mounting Track



- * Galvanized steel
- * Steel-wheeled trolleys
- * 1" dia. galvanized steel pipe staffs
- * Bi-parting double slide model also available



Locking Pin



Nylon Mesh Screen



Cane Bolt Drop Pin



- * Integral 5/8" dia. painted steel cane bolt locking pin & chain for wind load resistance.



- * 10 oz. / sq. yd. high-strength vinyl-coated polyester. 15 x 10 thread count
- * Light stabilized
- * Mildew & decay-resistant
- * Fire-retardant
- * Cleans with mild soap & water



Flex-Master® Model 120-A Fabric Roll-up Doors

The sectional panel design is created by using a panel material that is held in place and stabilized by the patented full-width anodized aluminum hinge profiles.

An optional summer/winter design is also available allowing you to change any, or both of the lower two opaque panels, with insect control barrier screen mesh. This can help to promote air ventilation during the warmer months and can be easily accomplished without having to remove the entire roll or panel.

Flexon's Roll-up Doors are designed for low-duty cycle applications such as: dock doors; retail store-fronts; dumpster doorways; ground level door openings; maintenance shops; or, wherever environmental control is desired.

Available for door sizes up to 10'0" w x 10'0" h. For additional sizes, consult factory.



Flexon Sliding Barriers & Curtains

Areas enclosed with sliding barriers and curtains help to turn previously exposed work stations into safe, comfortable, energy-efficient spaces.

Designed for use in both interior and exterior applications, these barriers and curtains are custom-made to your application requirements.

Features include: transparent vinyl windows (optional); ball bearing steel-wheeled trolleys; 5/8" dia. cane bolt locking pins; and, galvanized steel guide tracks.

Available in wide selection of fabric colors and materials, Flexon Sliding Barriers and Curtains are also ideally suited for extended platform loading docks with overhead canopies or as in-plant partitions.



steel-master® Springless
Rolling Steel Service Door



Ideally suited for parking garages, apartment buildings and as a replacement for other types of roll-up doors. This springless security door has a direct-drive motor with a 5-year unlimited cycle warranty.

speed-master®
High Performance Roll-Up Door



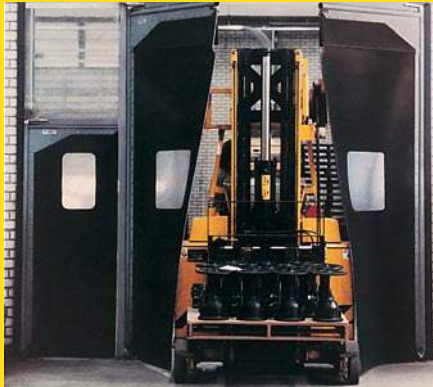
The first high-speed sectional roll-up door designed for both interior and exterior doorways. Hinged aluminum profiles act as windbars under wind or negative pressure conditions. Features "5-Year/Unlimited Cycle" warranty on drive system. Flex-Logic® interactive control box now available on most models.

flexidoor® Series ID
Full-thickness Door



A series of aesthetic full-thickness traffic doors especially designed for high-volume commercial and light-duty industrial applications. The low-profile hinge design allows the panel to swing on an even plane eliminating the stressful rising/falling action normally associated with cam-style closures. Available in a wide choice of colors.

flexidoor® Series HD
Heavy-duty Traffic Doors



A 3/8" thick flexible impact traffic door designed to withstand the severe abuse common to most industrial applications. Also available in models where USDA compliance is required.

Flexon Loading Dock Products

- * Hydraulic & Mechanical Levelers
- * Edge-of-Dock Mount Levelers
 - * Trailer Restraint Systems
 - * Safety Barrier Systems
- * Dock Door Seals & Shelters
- * Insect Control Barriers & Screens
 - * Sliding Curtains & Barriers

Engineering Assistance

Complete product specifications and drawings are available upon request. Contact the Flexon, Inc. Sales Department for details.

Cost Justification Analysis

For a FREE no-obligation cost justification analysis of your application, just call your local factory-trained Flexon representative for a copy today.

Distributed by:

Products in this catalog are covered by U. S. patents nos. 3,500,599; 4,736,785

We reserve the right to change specifications without notice.



Buncher Industrial Park
Avenue C Building 20-A
Leetsdale, PA 15056-1376
Telephone: (412) 749-0400
Toll Free: (800) 365-3667
FAX: (412) 749-0410
www.flexoninc.com
e-mail: sales@flexoninc.com

Products in this catalog are covered by U.S. Patents.
Other Patents Pending. Litho in USA 7/06