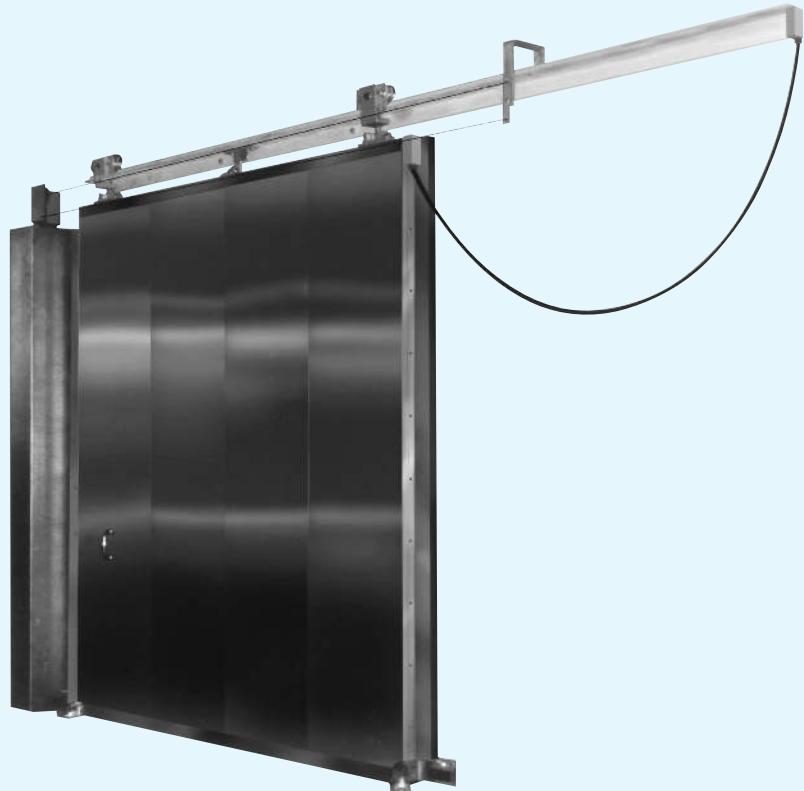


## FIRETEMP MANUALLY OPERATED

### SINGLE LEAF HORIZONTAL SLIDING COOLER AND FREEZER FIRE DOORS



- Carry UL 3-Hour Class A Fire Label . . . Tested in Accordance with UL 10B, ASTM E-152, and NFPA-80
- Galvanized or Stainless
- Door Closer Mechanism with Fusible Links

#### COOLER DOOR SPECIFICATIONS

Supply where indicated on plans Jamison Firetemp Manually Operated Single Leaf Horizontal Sliding Cooler Fire Door. Door Leaf to be metal clad with #20 gauge galvanized steel front and back. Internal structure of door to be steel channel.

Door to be filled with 4" Jamison specially formulated fire resistant insulation with an R value of 17 at 40° F.

Hardware and track to have protective coating against corrosion.

Gaskets at sides and head to be adjustable copolymer material, sill gasket on door to be sweep type.

Door to be equipped with fusible link counter-weighted closing mechanism.

#### FREEZER DOOR SPECIFICATIONS

Freezer door specifications to be same as cooler door except for these substitutions and additions:

Provide heater cables in top, sides, and bottom of door. Complete device to be assembled, ready for connection to 120 volt, 60 Hertz, single phase AC line.

2. Maximum cold room temperature on back of Firetemp Freezer Door is -20°F. (Note: Firetemp Door cannot be used if temperature is below -20°F.)

Supply where indicated on plans Jamison Firetemp Manually Operated Single Leaf Horizontal Sliding Freezer Door.

#### SPECIAL NOTES:

3. Maximum temperature difference between warm side of wall and freezer is 60°F.

Metal cladding on warm side of door to be applied with all seams and all bolt holes sealed.

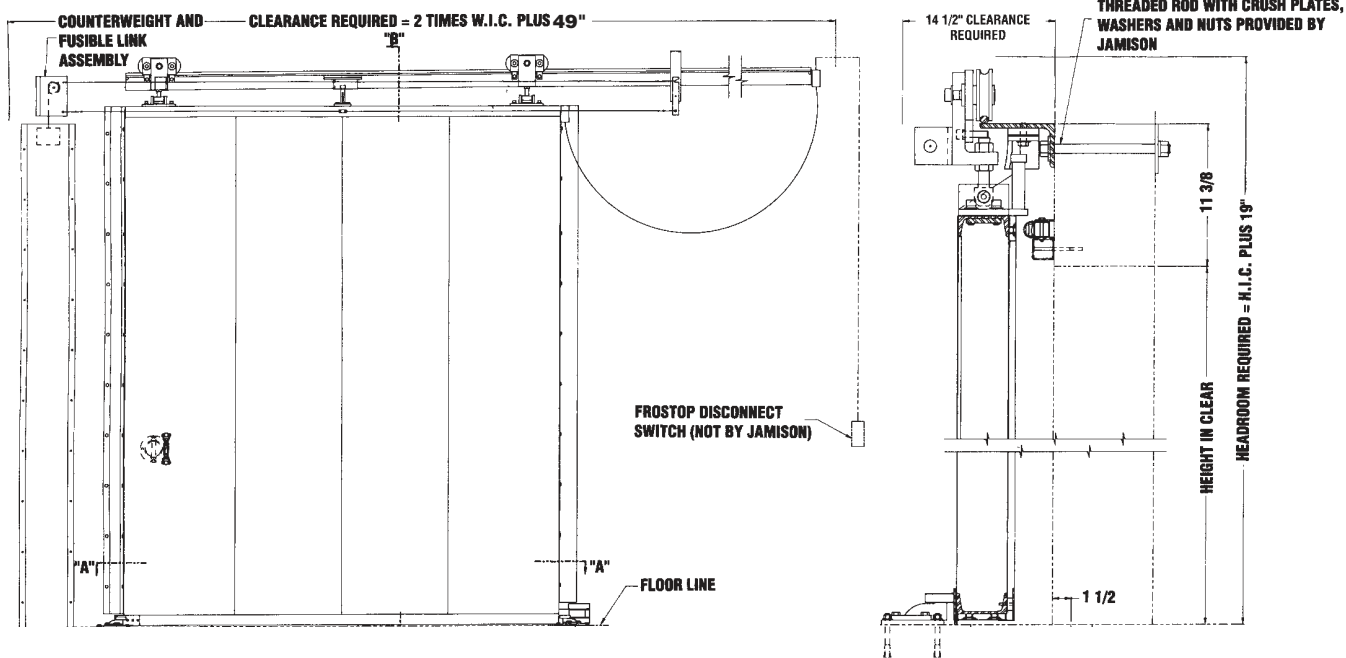
1. Firetemp Freezer door is designed to be installed with the front of the door in rooms with temperatures +33°F and above.

#### OPTIONS: (SPECIFY which options are desired):

1. Metal cladding can be stainless steel (type 430) or painted steel.
2. M.I.D. Requirements

3. Padlocking provisions on front or back of door with safety release on opposite side. (Specify which side with locking.) Safety release feature permits door hardware to be released, thus minimizing possibility of personnel being locked in room. (Option voids UL label.)

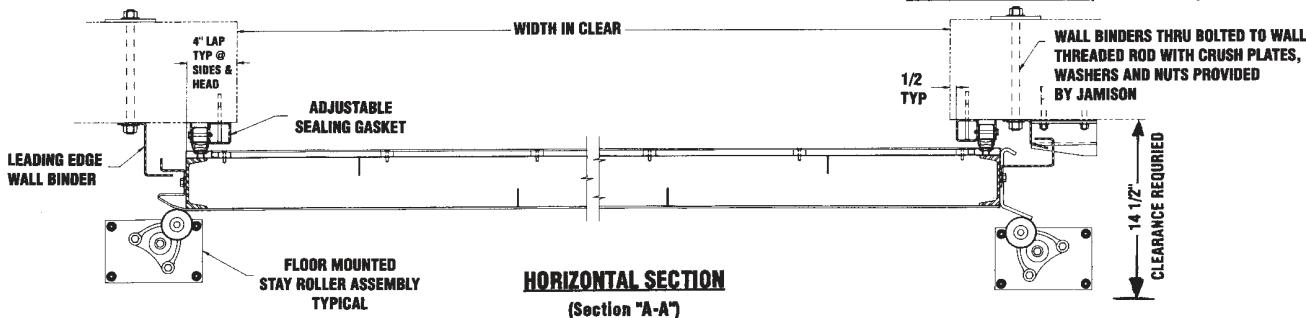
4. Metal Kickplates
5. Power Operation (Option voids UL label.)



### FRONT ELEVATION

R.H. SLIDE DOOR SHOWN - L.H. SLIDE DOOR OPPOSITE

### VERTICAL SECTION (Section "B-B")



### SIZES AVAILABLE

Jamison Firetemp Manual Single Horizontal Sliding Cold Storage Cooler and Freezer Fire Doors are available with an Underwriters 3-hour Class A Label in sizes 8'0" x 10'0" height in clear and less. Single Doors in sizes exceeding 8'0" x 10'0", doors with locking and power doors are available with the same construction as the tested door model but without the UL label.

### INSTALLATION POINTS:

1. Concrete or masonry walls must be used with 3-hour fire doors and be installed true, plumb and square and be of sufficient size to accommodate door weight.
2. Hardware and track are factory mounted for easy field erection.
3. Installation instructions are shipped with the door.
4. For freezer door, provide separate 120 volt, 60 cycle, single phase line complete with keyswitch (by others) for connection to heater cable circuit.
5. After erection and adjustment of door and frame for plumbness and squareness, final mechanical adjustments should be made for tight seal.
6. All thru bolts and joints between wall and door frame should be vapor sealed with oil-suspended, nonhardening, waterproof caulking compound or similar material.

**SPECIALY ENGINEERED DOORS BY**  
**JAMISON**

Jamison Door Company • P. O. Box 70 • Hagerstown, MD 21741-0070  
 Call Toll Free • 1-800-532-3667 or 301-733-3100  
 FAX • 301-791-7339  
 INTERNET: <http://www.jamisondoor.com>  
 E-MAIL: [contact@jamisondoor.com](mailto:contact@jamisondoor.com)