

JAMOTUF®

SWINGING HEAVY DUTY PLASTIC COOLER AND FREEZER DOORS.

- *Plastic Door in Stainless Steel Clad Frame.*

Complies with Meat Inspection Division of U.S. Department of Agriculture specifications for service in meat packing and processing industries.

Cooler Door Shown
Right Hand Swing



COOLER DOOR SPECIFICATIONS:

Supply where indicated on plans Jamison Jamotuf® Cooler Door. Door panel to consist of two pans bonded together with polyester resin. Each pan to have an outer layer of polyester plastic with white pigment, balance of pan to consist of glass fibre reinforced polyester plastic. Door panel to have sufficient blocking for hardware attachment.

Door panel to be filled with 4" of non-CFC polyurethane insulation with an R value of

28 at 40° F. Insulation to adhere to the inner and outer pans to achieve maximum unit rigidity.

Frame to be metal clad on all exposed surfaces with #16 gauge stainless steel 4'0" high, balance #24 gauge. Door protected, front and back, with #16 gauge stainless steel kickplates 4'0" high. Metal on door applied with adhesive to present a smooth unbroken surface without penetration by nails or screws.

All metal cladding to be applied in accordance with M.I.D., USDA regulations.

Gasket at sides and head of door lip to be grease resistant synthetic skin with resilient sponge core. Sill gasket to be sweep type.

Hardware to be chrome plated and to consist of adjustable spring hinges, safety release fastener (permits door to be opened from inside even though padlocked on front), door pull on back and back handle guard.

FREEZER DOOR SPECIFICATIONS:

Freezer door specifications to be same as cooler door except for these substitutions and additions:

Supply where indicated on plans Jamison Jamotuf® Freezer Door.

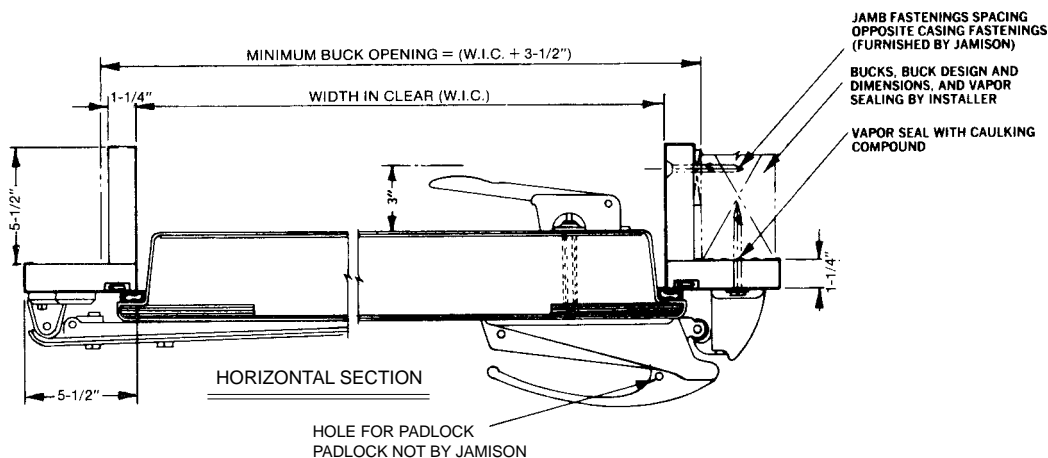
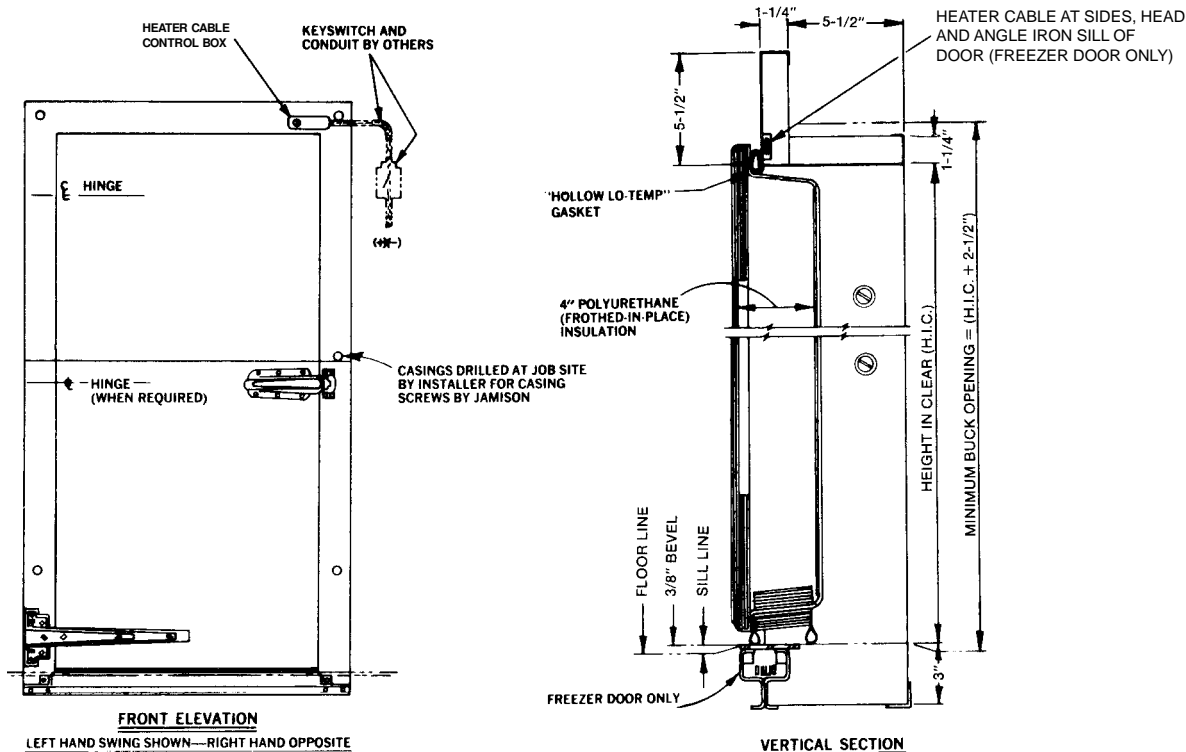
Provide heater cables in the two sides, head, and sill of the frame at gasket contact areas. Heating cable to be assembled, ready for connection to 120 volt, 60 Hertz, single phase AC line.

SPECIAL NOTES:

1. When cold room temperature is below -20° F. or temperature difference is more than 90° F., contact factory.
2. If freezer door must be mounted in freezer room, please contact factory for recommendations.

OPTIONS: (SPECIFY which options are desired.)

1. Galvanized steel metal cladding and hardware with protective coating against corrosion are available. Galvanized steel metal cladding is furnished in same gauges as indicated for stainless steel.
2. Colors available - pigment of door to be one of four optional colors other than white. (JD - Ivory, JD - Blue, JD - Salmon, and JD - Blue-Green).
3. Deep jambs/inside trim.
4. 6" of insulation for freezer door (R value of 42).
5. Door Closer - galvanized or chrome.
6. View Window: 12" x 14" sealed glass unit.
 - a. Cooler Door - 2 layer, 1" thick.
 - b. Freezer Door - 3 layer, 1" thick with heat film.
7. Available as track door with insulated bulkhead.
8. Available as vestibule door with double batten doors hung in same frame, behind insulated door.



FREEZER DOOR SHOWN - COOLER DOOR FURNISHED WITHOUT HEATER CABLES.

INSTALLATION POINTS

1. Bucks should be installed true, plumb and square and of sufficient size to accommodate door weight.
2. Wood bucks and back of door frame should be painted with a suitable preservative to protect against moisture penetration into wood.
3. For freezer door, provide separate 120 volt, 60 Hertz, single phase line complete with key switch (by others) for connection to heater cable circuit.
4. All bolts, lags and joints between buck and door frame should be vapor sealed with oil-suspended, nonhardening, waterproof caulking compound or similar materials.

SPECIALLY ENGINEERED DOORS BY
JAMISON

Jamison Door Company • P. O. Box 70 • Hagerstown, MD 21741-0070
Call Toll Free • 1-800-532-3667 or 301-733-3100
FAX 301-791-7339
INTERNET: <http://www.jamison-door.com>
E-MAIL: sales@jamison-door.com