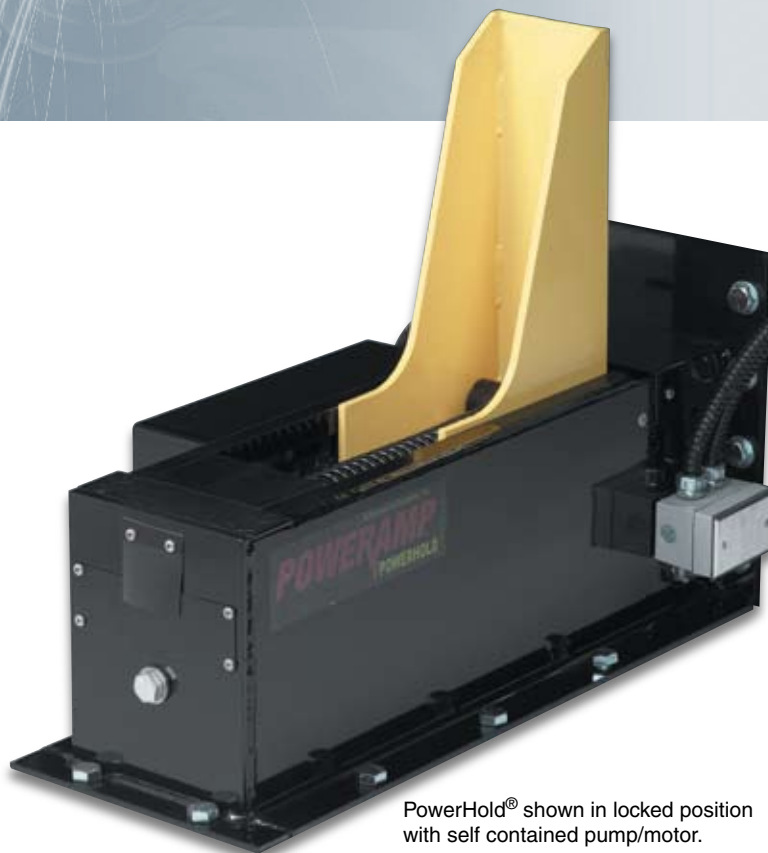
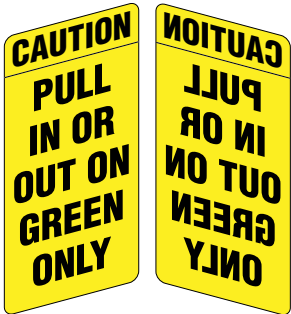


PowerHold® Series Automatic



PowerHold® shown in locked position with self contained pump/motor.



PowerHold® Standard Features Include...

- Push Button Activation
- Non-Impact Design - Wall or Driveway Mount
- Low Profile Design
- Positive Restraining Force Eliminates "Trailer Creep"
- Restraining Force in Excess of 30,000 lbs.
- Solid State Control - PLC
- Amber Light - Caution Indicator
- Automatic Re-Store Feature
- Keyed Override
- Dock Leveler or Door Interlock
- Compact "Traffic Style" Exterior Lights
- Designed to Meet 1998 NHTSA Regulation
- 5 Year Structural Warranty
- 2 Year Hydraulic Warranty

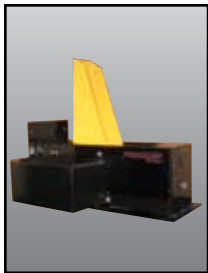
Safety Products Vehicle Restraint

Value,
Power and
Performance
In One
Design!

Structurally Superior By Design!

PowerHold® is a non-impact, self-aligning, hydraulic truck restraint system. Once activated, Powerhold seeks and finds a truck's "Rear Impact Guard" (RIG), then applies continuous pressure to firmly restrain the vehicle. The Powerhold's constant pressure on the RIG removes the dangerous gap and eliminates "trailer creep" and potential loss of leveler lip purchase.

PowerHold® has been tested to withstand up to 30,000 lbs. of pull-out force and has a service range of 0" to 10" horizontally from the face of the dock bumpers and 10" minimum to 27" vertically above drive approach. The unit will function at temperatures as low as -35°F and can be easily installed on any new or existing dock, or even docks without levelers. PowerHold® uses no chain drives, rack and pinion operation, or pneumatic cylinders. It's hydraulic design eliminates the need for costly maintenance and adjustment of mechanical components. PowerHold® is also compatible with dock levelers using CentraPower® multi-leveler remote hydraulic systems.



A key switch bypasses the restraining system to service trucks with missing or damaged RIGs by utilizing the "lights only" mode for safety communication with dock personnel and truck drivers. An interconnect terminal block is provided with every PowerHold® control unit to prevent leveler operation until restraint is engaged. Other optional interlock sequences are available.



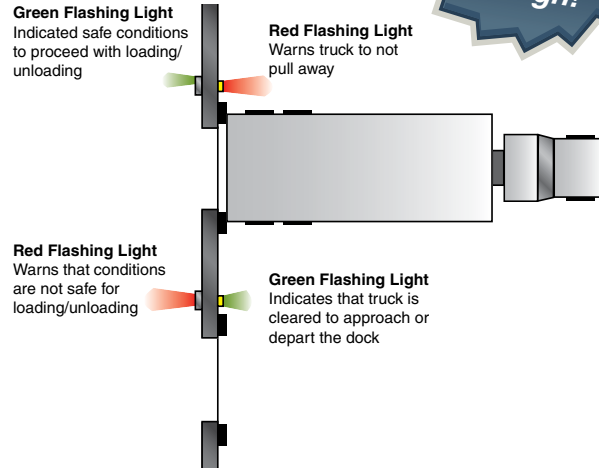
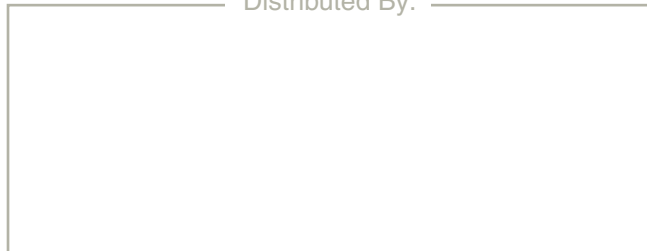
The black powder coated housing and zinc dichromate plated restraint arm make PowerHold® highly resistant to corrosion from weather and dirty dock environments.



Combined with an advanced light communication system and advanced solid state programmable logic controller (PLC), PowerHold® promotes an extremely safe and efficient loading dock environment by establishing a clear line of communication between truck driver and dock attendant. The inside control panel and exterior compact light package incorporates a universal red and green signal which work in opposing modes. A green light outside guides a backing truck into the dock position while a red light inside warns the dock attendant that loading/unloading conditions are not safe. Once the PowerHold® has secured the RIG, the lights switch to green inside and red outside, informing the truck driver not to move and indicating a safe condition for the dock attendant.

The communication system also contains a set of "high visibility" exterior caution signs that warns truck drivers to "Pull In Or Out On Green Only"

Distributed By:



Optional Equipment for the PowerHold® ...

- Self-Contained or Remote Powerpack
- Combined with Leveler Powerpack (VS, VH & PR Series Only)
- CentraPower - Multiple Units on Single Power Source
- Integrated Control Panel
- L.E.D. Interior and Exterior Lights
- Custom Interlock Sequence
- Extended Hook Range
- Zinc Plated with Pavcoat Super seal (For Highly Corrosive Applications)
- Variety of Cantilever Brackets & Installation Hardware

The PowerHold® Vehicle Restraint removes dangerous gap and eliminates trailer creep.

A Division of Systems, Inc.



W194 N11481 McCormick Drive • Germantown, WI 53022
Phone: 262.255.1510 • Fax: 262.255.4199

Toll-Free: 800.643.5424

or visit us on the web at...www.DockSystemsInc.com